

Unlock the  
Future of



# Cancer Research

Integrated Single-Cell &  
Spatial Transcriptomics Solutions

## Why Partner with Us?

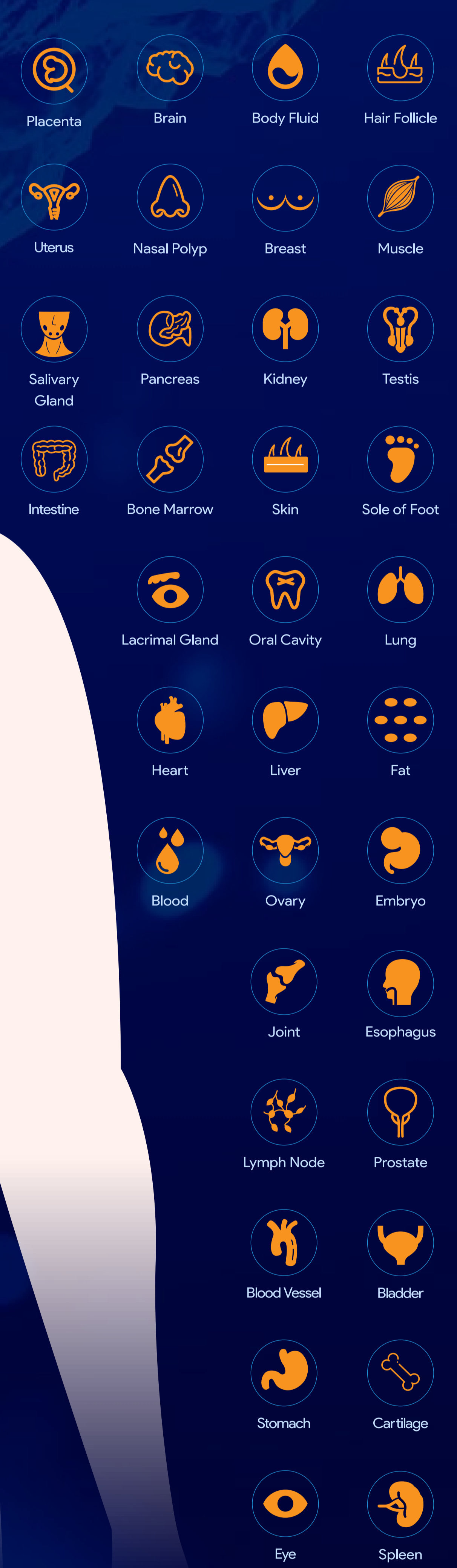
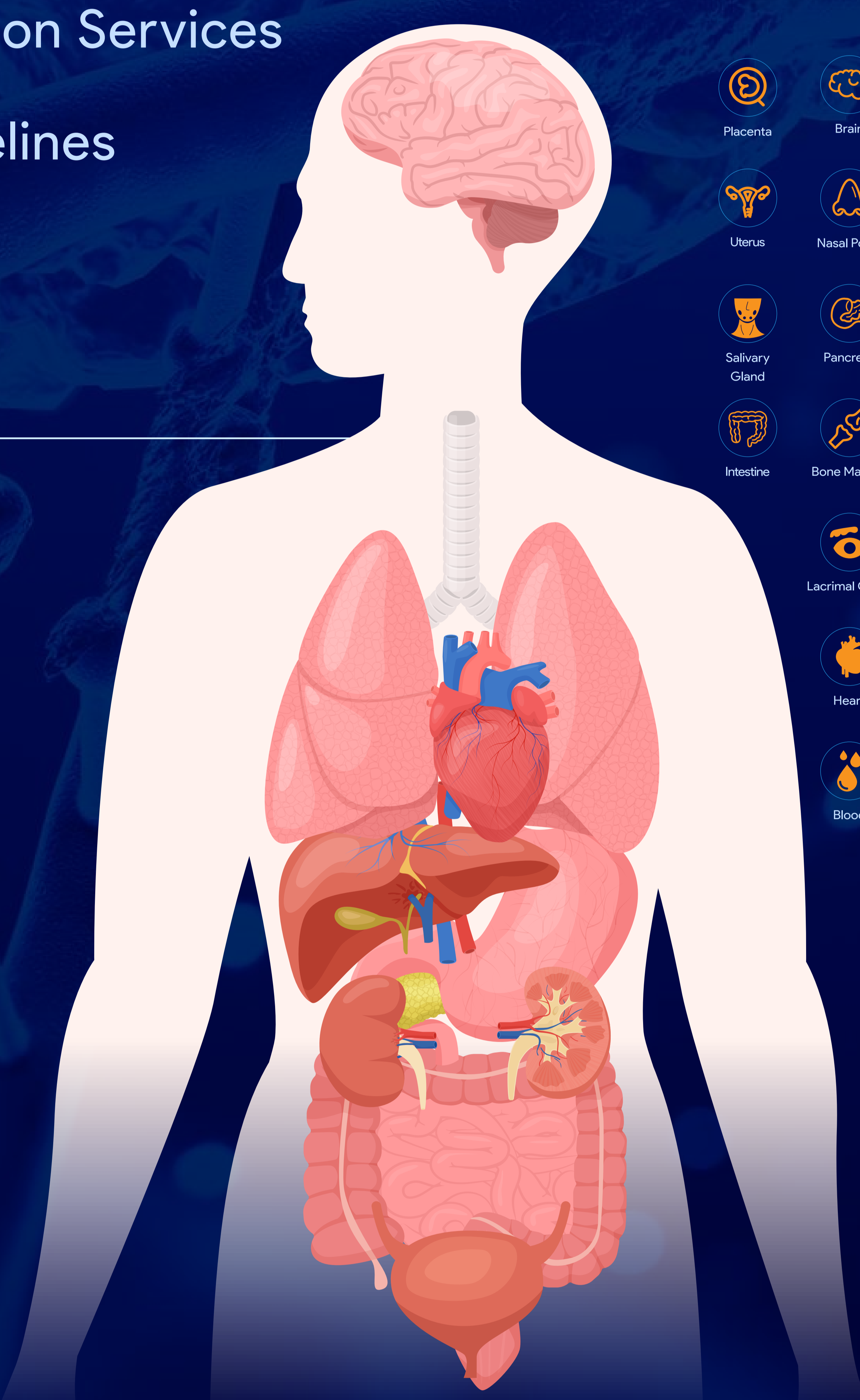
- 40+ Validated Cancer Types
- Rich Project Experience
- Multi-Platform Flexibility: 10X Genomics, BD, MobiNova
- Publication-Ready Data Packages
- Multi-Omics Integration Services
- Custom Analysis Pipelines

## Key Metrics

370+  
Publications

2,000+  
Samples Processed

17,000+  
Lab Experiments



## Featured Oncology Research

- Solid Tumors**  
Thoracic, Gastrointestinal, Breast Cancer
- Haematological Malignancies**  
Leukemia, Lymphoma, Multiple Myeloma
- Rare & Special Cancers**  
Skin Cancer, CUP, CNSTumors, Sarcoma
- Other Cancers**

## Technology Differentiators

Patented Multi-Omic Spatial  
Mapping of Tumor Microenvironment

TCR/BCR  
Immune Repertoire Profiling

### Contact us

Singapore :  
112 ROBINSON ROAD #03-01

Germany :  
Kreuzstr.60,40210 Düsseldorf



Email :  
eva.zhang@omicsempower.com

More information is welcome to visit  
[www.omicsempower.com](http://www.omicsempower.com)